

# Coupling plug with internal thread

- Coupling plug
- NW 7,2 mm



Silicon	silicone-free
Working pressure min./max.	0 ... 16 bar
Ambient temperature min./max.	-10 ... 90 °C
Medium temperature min./max.	-10 ... 90 °C
Medium	Compressed air
Weight	See table

The delivered product may vary from that in the illustration.

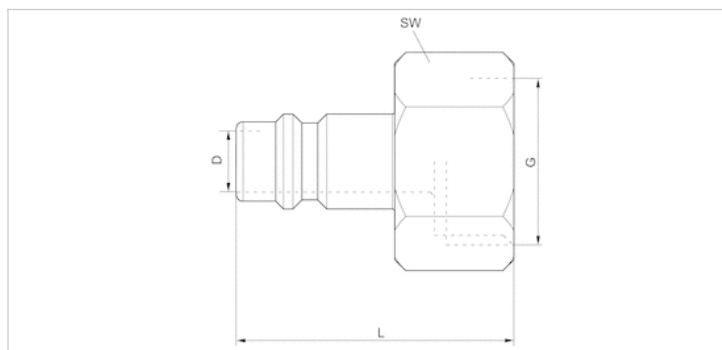
## Technical data

Part No.	Nominal width NW	Port G	Port D	Housing	Delivery unit	Weight	Fig.
1823373001	7,2 mm	G 1/4	NW 7,2	Brass nickel-plated	10 piece	0,025 kg	Fig. 2
1823373081	7,8 mm	G 1/4	NW 7,8	Steel galvanized	10 piece	0,024 kg	Fig. 2
1823373002	7,2 mm	G 3/8	NW 7,2	Brass nickel-plated	10 piece	0,025 kg	Fig. 2
1823373082	7,8 mm	G 3/8	NW 7,8	Steel galvanized	10 piece	0,024 kg	Fig. 2
1823373083	7,8 mm	G 1/2	NW 7,8	Steel galvanized	5 piece	0,034 kg	Fig. 2

## Technical information

Material	
Housing	Brass, nickel-plated Steel, galvanized

## Dimensions



## Dimensions

Part No.	Port G	Nominal width NW	L	SW
1823373001	G 1/4	7,2 mm	33	17
1823373081	G 1/4	7,8 mm	33	17
1823373002	G 3/8	7,2 mm	33	19
1823373082	G 3/8	7,8 mm	33	19
1823373083	G 1/2	7,8 mm	33	24