

Bearing brackets MT4, MT5, MT6, Series AT4

- Cylinder mounting in accordance with ISO 15552
- Suitable piston Ø 20 25 32 40 50 63 80 100 125 160 200 mm



Standards

ISO 15552

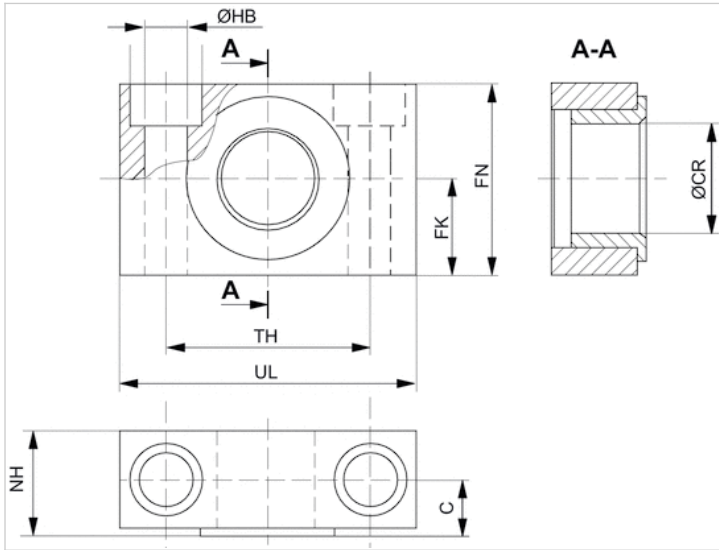
Technical data

Part No.	Piston Ø	Hole Ø	Scope of delivery
1827001603	20 25 32 mm	12 mm	2 piece
1827001604	40 50 mm	16 mm	2 piece
1827001605	63 80 mm	20 mm	2 piece
1827001606	100 125 mm	25 mm	2 piece
1827001607	160 200 mm	32 mm	2 piece

Technical information

Material	
Material	Steel
	galvanized
Guide bushing	Sintered bronze

Dimensions



Dimensions

Part No.	Piston Ø	UL	NH	TH	C	CRH9	HBH13	FN	FK	Plain bearing
1827001603	20 25 32 mm	46	18	32 ±0,2	10.5	12	6.6	30	15 ±0,1	Sintered bronze
1827001604	40 50 mm	55	21	36 ±0,2	12	16	9	36	18 ±0,1	Sintered bronze
1827001605	63 80 mm	65	23	42 ±0,2	13	20	11	40	20 ±0,1	Sintered bronze
1827001606	100 125 mm	75	28.5	50 ±0,2	16	25	14	50	25 ±0,1	Sintered bronze
1827001607	160 200 mm	92	40	60 ±0,3	22.5	32	18	60	30 ±0,2	Sintered bronze