

Ball eye rod end with flange, Series AP6

- to mount on cylinder CCL-IS/IC, SSI, CSL-RD, ICM, ICS-D2



Weight

See table below

Technical data

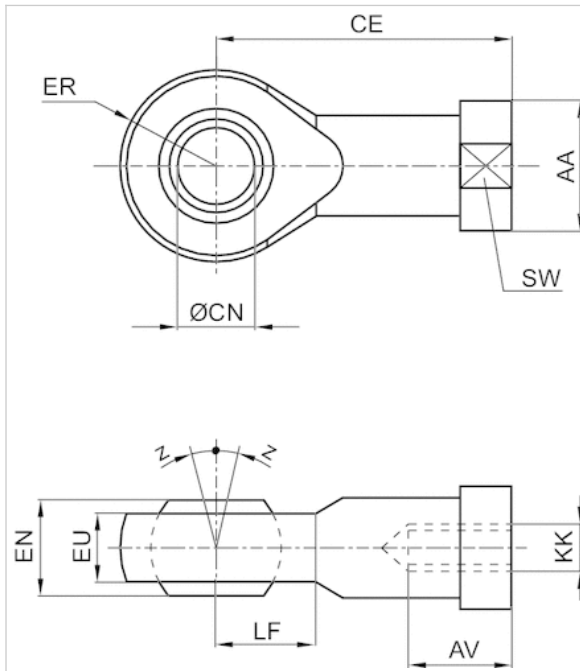
Part No.	Suitable piston rod thread	for	Swivel bearing Ø
			CN
8958209002	M4	ICM	5 mm
8958209012	M6	CCL-IC CSL-RD ICM	6 mm
8958209022	M8	CCL-IC CSL-RD ICM	8 mm
8958209032	M10x1,25	CCL-IS CCL-IC SSI CSL-RD ICM ICS-D2	10 mm
8958209042	M12x1,25	CCL-IS CCL-IC SSI ICS-D2	12 mm
8958209052	M16x1,5	CCL-IS CCL-IC SSI ICS-D2	16 mm
8958209062	M20x1,5	CCL-IS SSI ICS-D2	20 mm
8958209072	M27x2	CCL-IS	30 mm

Part No.	Weight
8958209002	0,02 kg
8958209012	0,04 kg
8958209022	0,06 kg
8958209032	0,09 kg
8958209042	0,12 kg
8958209052	0,23 kg
8958209062	0,41 kg
8958209072	1,24 kg

Technical information

Material
Stainless steel

Dimensions



Dimensions

Part No.	KK	AA	AVmin.	CE	Ø CNH7	EN -0,1	ER	EU max.	LF	SW	Z [°]max.
8958209002	M4	11	8	27	5	8	9	6	9	9	6,5
8958209012	M6	13	9	30	6	9	10	6,75	10	11	6,5
8958209022	M8	16	12	36	8	12	12	9	12	14	6,5
8958209032	M10x1,25	19	15	43	10	14	14	10.5	14	17	6,5
8958209042	M12x1,25	22	18	50	12	16	16	12	16	19	6,5
8958209052	M16x1,5	27	24	64	16	21	21	15	21	22	7,5
8958209062	M20x1,5	34	30	77	20	25	25	18	25	30	7,5
8958209072	M27x2	50	45	110	30	37	35	25	35	41	7,5