

Ball eye rod end without flange, Series AP6

- to mount on cylinder 102



Weight

See table

Technical data

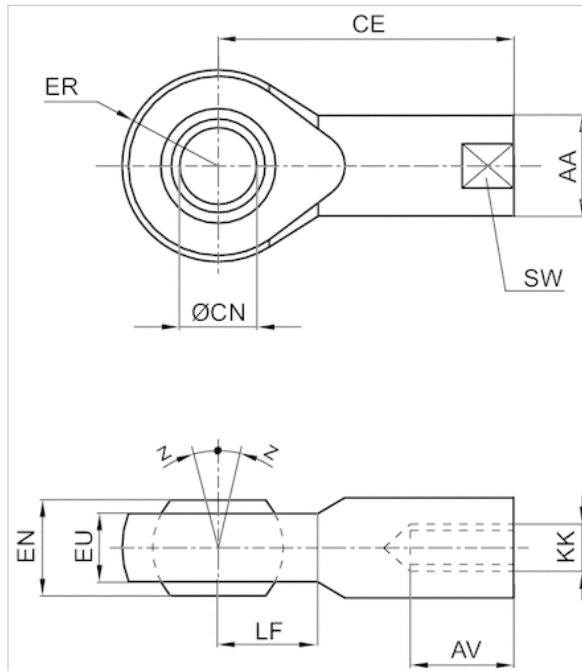
Part No.	Suitable piston rod thread	for
3660902000	M10x1,25	PRA TRB CCI SSI RPC KPZ 167 CVI RDC
3660904000	M12x1,25	PRA TRB CCI SSI RPC KPZ 167 CVI 102
3660905000	M16x1,5	PRA TRB CCI SSI RPC KPZ 167 CVI RDC 102
3660908000	M20x1,5	PRA TRB KPZ 167 CVI 102
3660912000	M24x2	-
3660916000	M36x2	ITS

Part No.	Swivel bearing Ø	Weight
	CN	
3660902000	10 mm	0,08 kg
3660904000	12 mm	0,12 kg
3660905000	16 mm	0,28 kg
3660908000	20 mm	0,44 kg
3660912000	25 mm	0,79 kg
3660916000	35 mm	1,76 kg

Technical information

Material	
	Steel
	galvanized

Dimensions



Dimensions

Part No.	KK	AA	AVmin.	CE	Ø CNH7	EN -0,1	ER	EU max.	LF	SW	Z [°]max.
3660902000	M10x1,25	19	15	43	10	12	15	9	14	17	8
3660904000	M12x1,25	22	16	50	12	12	17	8	16	19	8
3660905000	M16x1,5	29	24	67	16	16	23	11	20	24	8
3660908000	M20x1,5	34	30	77	20	20	26,5	13	23	30	8
3660912000	M24x2	42	36	94	25	25	32	17	27	36	8
3660916000	M36x2	58	56	125	35	35	42	21	37	50	6