




5/3-directional valve, Series 581, size 1



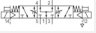

- ISO 5599-1
- ISO 1
- 5/3
- Qn = 1100 l/min
- Compressed air connection output Base plate ISO 5599-1
- Electrical connection Plug, 3-pin
- Manual override without detent



Version	Spool valve
Sealing principle	Soft sealing
Blocking principle	Single base plate principle
Connection type	Plate connection
Standards	ISO 5599-1, ISO 1
Working pressure min./max.	See table below
Control pressure min./max.	3 ... 10 bar
Ambient temperature min./max.	-10 ... 50 °C
Medium temperature min./max.	-10 ... 50 °C
Medium	Compressed air
Max. particle size	50 µm
Oil content of compressed air	0 ... 5 mg/m³
Nominal flow Qn	1100 l/min
Flow conductance C	4,3 l/(s*bar)
Protection class with connection	IP67
Protective circuit	Z-diode
Reverse polarity protection	Protected against polarity reversal
LED status display	Green
Duty cycle	100 %
Typ. switch-on time	14 ms
Typ. switch-off time	22 ms
Mounting screw	with hexagon socket
Mounting screw tightening torque	2 Nm
Weight	0,22 kg

Technical data

Part No.		MO	Operational voltage DC	Voltage tolerance DC	Power consumption DC
5811460160			24 V	-10% / +10%	2,2 W
5811461160			24 V	-10% / +10%	2,2 W
5811462160			24 V	-10% / +10%	2,2 W
5811463160			24 V	-10% / +10%	2,2 W
5811560160			24 V	-10% / +10%	2,2 W
5811561160			24 V	-10% / +10%	2,2 W
5811562160			24 V	-10% / +10%	2,2 W
5811563160			24 V	-10% / +10%	2,2 W
5811760160			24 V	-10% / +10%	2,2 W
5811761160			24 V	-10% / +10%	2,2 W

Part No.		MO	Operational voltage DC	Voltage tolerance DC	Power consumption DC
5811762160			24 V	-10% / +10%	2,2 W
5811763160			24 V	-10% / +10%	2,2 W

Part No.	Pilot	Working pressure min./max.	Cable length	Electrical connection Pilot valve
5811460160	internal	3 ... 10 bar	0,5 m	Plug 3-pin
5811461160	internal	3 ... 10 bar	0,5 m	Plug 3-pin
5811462160	external	-0,95 ... 10 bar	0,5 m	Plug 3-pin
5811463160	external	-0,95 ... 10 bar	0,5 m	Plug 3-pin
5811560160	internal	3 ... 10 bar	0,5 m	Plug 3-pin
5811561160	internal	3 ... 10 bar	0,5 m	Plug 3-pin
5811562160	external	-0,95 ... 10 bar	0,5 m	Plug 3-pin
5811563160	external	-0,95 ... 10 bar	0,5 m	Plug 3-pin
5811760160	internal	3 ... 10 bar	0,5 m	Plug 3-pin
5811761160	internal	3 ... 10 bar	0,5 m	Plug 3-pin
5811762160	external	-0,95 ... 10 bar	0,5 m	Plug 3-pin
5811763160	external	-0,95 ... 10 bar	0,5 m	Plug 3-pin

Part No.	Protected against polarity reversal	Throttle
5811460160	Protected against polarity reversal	-
5811461160	Protected against polarity reversal	with throttle
5811462160	Protected against polarity reversal	-
5811463160	Protected against polarity reversal	with throttle
5811560160	Protected against polarity reversal	-
5811561160	Protected against polarity reversal	with throttle
5811562160	Protected against polarity reversal	-
5811563160	Protected against polarity reversal	with throttle
5811760160	Protected against polarity reversal	-
5811761160	Protected against polarity reversal	with throttle
5811762160	Protected against polarity reversal	-
5811763160	Protected against polarity reversal	with throttle

Connection 12 must be connected with atmospheres, Nominal flow Qn at 6 bar and $\Delta p = 1$ bar, MO = Manual override

Technical information

The min. control pressure must be adhered to, since otherwise faulty switching and valve failure may result!

The pressure dew point must be at least 15 °C under ambient and medium temperature and may not exceed 3 °C .

The oil content of compressed air must remain constant during the life cycle.

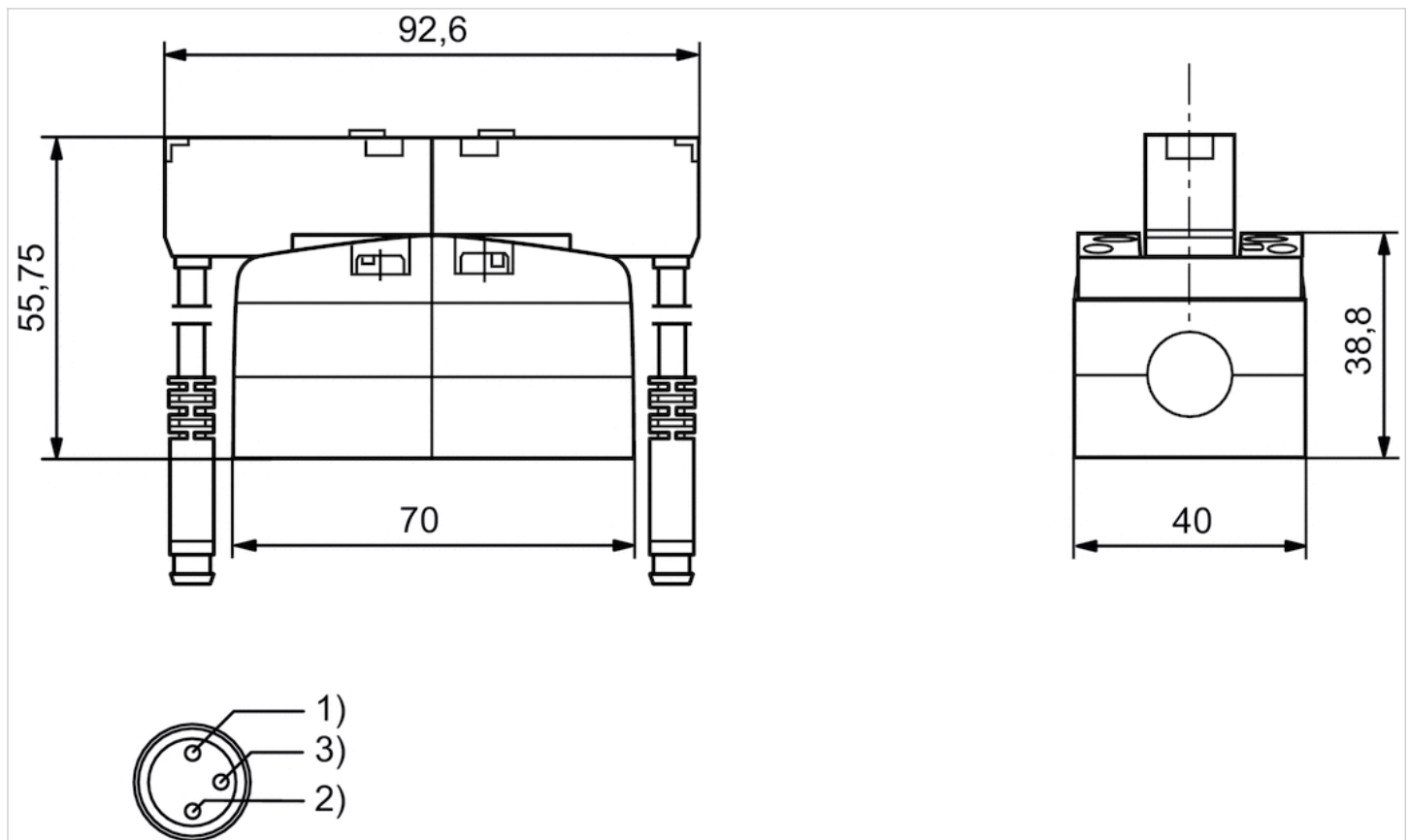
Use only the approved oils from AVENTICS. Further information can be found in the "Technical information" document (available in the MediaCentre).

Technical information

Housing	Polyamide, fiber-glass reinforced
Seals	Acrylonitrile butadiene rubber

Dimensions

Dimensions



Pin assignment 1) brown (+24 V) 2) green/yellow (ground) 3) blue (0 V)