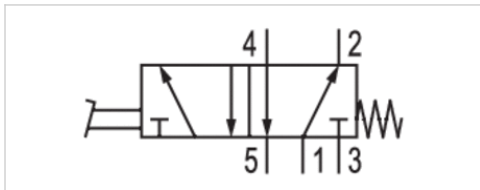


5/2-directional valve, Series CD07

- Qn = 1200 l/min
- Compressed air connection output G 1/4
- Pipe connection
- suitable for ATEX



Version	Spool valve, positive overlapping
Activation	Mechanical
Actuating element	Pedal
Switching principle	5/2
Sealing principle	Soft sealing
Nominal flow Qn	1200 l/min
Compressed air connection	according to ISO 228-1
Working pressure min./max.	-0,95 ... 10 bar
Ambient temperature min./max.	-25 ... 80 °C
Medium temperature min./max.	-25 ... 80 °C
Medium	Compressed air
Max. particle size	50 µm
Oil content of compressed air	0 ... 1 mg/m ³
Weight	0,76 kg

Technical data

Part No.	Compressed air connection	
	Input	Output
5634670100	G 1/4	G 1/4

Part No.	Compressed air connection	
	Exhaust	
5634670100	G 1/4	

Nominal flow Qn at 6 bar and $\Delta p = 1$ bar

Technical information

Material	
Housing	Die cast zinc Polyamide, fiber-glass reinforced
Seals	Acrylonitrile butadiene rubber

Dimensions

Dimensions

