

Bellow suction gripper, BSA series

- F = 0,7 N

- external diameter 9 mm

- External thread

- Heat resistant



Ambient temperature min./max. -30 ... 180 °C
 Min./max. temporary ambient temperature (30 s) -50 ... 220 °C
 Hardness according to standard 55 ± 5 Shore A
 Abrasion value according to DIN 535 16 180-200 mm³
 Weight See table

Technical data

Part No.	Compressed air connection	external diameter	Holding force	Separation force	Volume
			*)		
1820415171	M5	5 mm	0,1 N	0,8 N	0,033 cm ³
1820415108	G 1/8	5,9 mm	0,1 N	0,9 N	0,04 cm ³
1820415076	G 1/8	9 mm	0,7 N	2,3 N	0,15 cm ³
1820415080	G 1/8	14,5 mm	1,2 N	5,7 N	0,98 cm ³
1820415084	G 1/8	17,2 mm	2,3 N	8,5 N	1,35 cm ³
1820415088	G 1/8	20 mm	3,8 N	12,1 N	2 cm ³
1820415092	G 1/4	32 mm	12 N	36,9 N	10 cm ³
1820415096	G 1/4	42,6 mm	13,6 N	44 N	19,5 cm ³
1820415100	G 1/4	62,2 mm	39,6 N	137 N	72,5 cm ³
1820415104	G 1/4	89 mm	45,2 N	286 N	165 cm ³

Part No.	Max. curving on object Rmin	Delivery unit	Weight
1820415171	8 mm	2 piece	0,005 kg
1820415108	8 mm	2 piece	0,005 kg
1820415076	10 mm	2 piece	0,005 kg
1820415080	15 mm	2 piece	0,006 kg
1820415084	20 mm	1 piece	0,006 kg
1820415088	30 mm	1 piece	0,007 kg
1820415092	35 mm	1 piece	0,017 kg
1820415096	75 mm	1 piece	0,027 kg
1820415100	75 mm	1 piece	0,06 kg
1820415104	100 mm	1 piece	0,18 kg

*) Theoretical value at 60% vacuum level, without safety factor

Technical information

To be used on uneven, sensitive, and smooth to slightly rough surfaces.

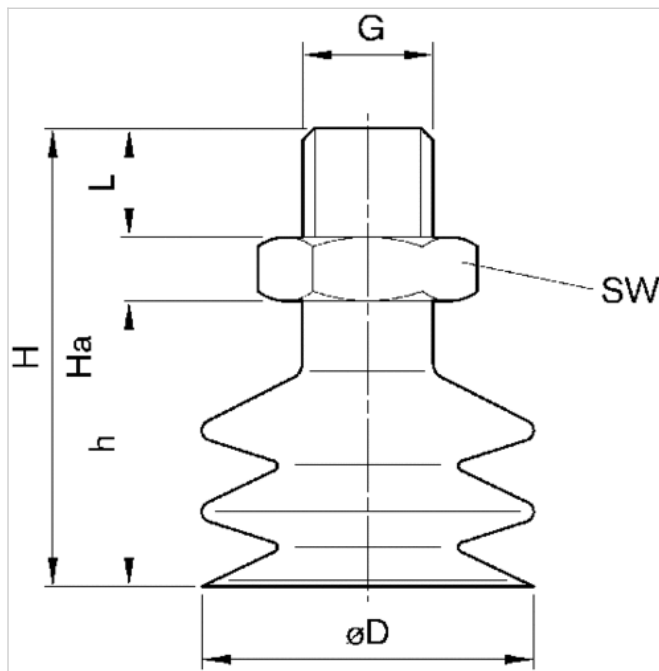
Technical information

Material

Connector	Aluminum
Vacuum	Fluoromethyl silicone

Dimensions

Dimensions



Dimensions

Part No.	ØD	G	Ha*)	H	h	SW	L
1820415171	5 mm	M5	21	24	13.5	8	5
1820415108	5,9 mm	G 1/8	23.5	27.5	14	14	7.5
1820415076	9 mm	G 1/8	25.5	28.5	15	14	7.5
1820415080	14,5 mm	G 1/8	26.5	35.5	22	14	7.5
1820415084	17,2 mm	G 1/8	26.5	35.5	22	14	7.5
1820415088	20 mm	G 1/8	26.5	35.5	22	14	7.5
1820415092	32 mm	G 1/4	37.5	52.5	37.5	17	11
1820415096	42,6 mm	G 1/4	41	61	46	17	11
1820415100	62,2 mm	G 1/4	41	70	55	17	11
1820415104	89 mm	G 1/4	69	103	88	21	11

*) Height for vacuum operation

Diagrams

Max. curving on object Rmin

