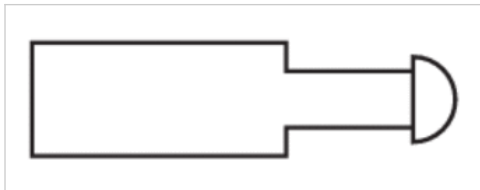


Industrial shock absorber, Series SA1-MC

- Cushioning self-compensating
- Mounting Lock nut
- Mounting thread M14x1,5 M20x1,5 M25x1,5
- SA1-MC



Ambient temperature min./max.	-20 ... 80 °C
Medium	Oil
Mounting	Lock nut
Weight	See table below



Technical data

Part No.	Mounting thread	Stroke	Max. energy absorption/stroke	Max. energy absorption/hour
R412010304	M14x1,5	14 mm	30 Nm	50000 Nm
R412010305	M14x1,5	14 mm	30 Nm	50000 Nm
R412010306	M14x1,5	14 mm	30 Nm	50000 Nm
R412010307	M20x1,5	13 mm	65 Nm	52000 Nm
R412010308	M20x1,5	13 mm	65 Nm	52000 Nm
R412010309	M20x1,5	13 mm	65 Nm	52000 Nm
R412010310	M25x1,5	25 mm	220 Nm	105600 Nm
R412010311	M25x1,5	25 mm	220 Nm	105600 Nm
R412010312	M25x1,5	25 mm	220 Nm	105600 Nm

Part No.	Effective mass me	Return spring force
	min./max.	min./max.
R412010304	3,5 ... 17 kg	13 ... 23 N
R412010305	9,9 ... 76 kg	13 ... 23 N
R412010306	62 ... 252 kg	13 ... 23 N
R412010307	7,5 ... 36 kg	12 ... 23 N
R412010308	20 ... 160 kg	12 ... 23 N
R412010309	130 ... 610 kg	12 ... 23 N
R412010310	24 ... 120 kg	15 ... 31 N
R412010311	440 ... 2050 kg	15 ... 31 N

Part No.	Effective mass me	Return spring force
	min./max.	min./max.
R412010312	1760 ... 10800 kg	15 ... 31 N

Part No.	Piston rod	sealing for piston rod
R412010304	Stainless steel, ground and hardened	-
R412010305	Stainless steel, hardened	Nitrile butadiene rubber
R412010306	Stainless steel, ground and hardened	-
R412010307	Stainless steel, ground and hardened	-
R412010308	Stainless steel, ground and hardened	-
R412010309	Stainless steel, ground and hardened	-
R412010310	Stainless steel, ground and hardened	-
R412010311	Stainless steel, ground and hardened	-
R412010312	Stainless steel, ground and hardened	-

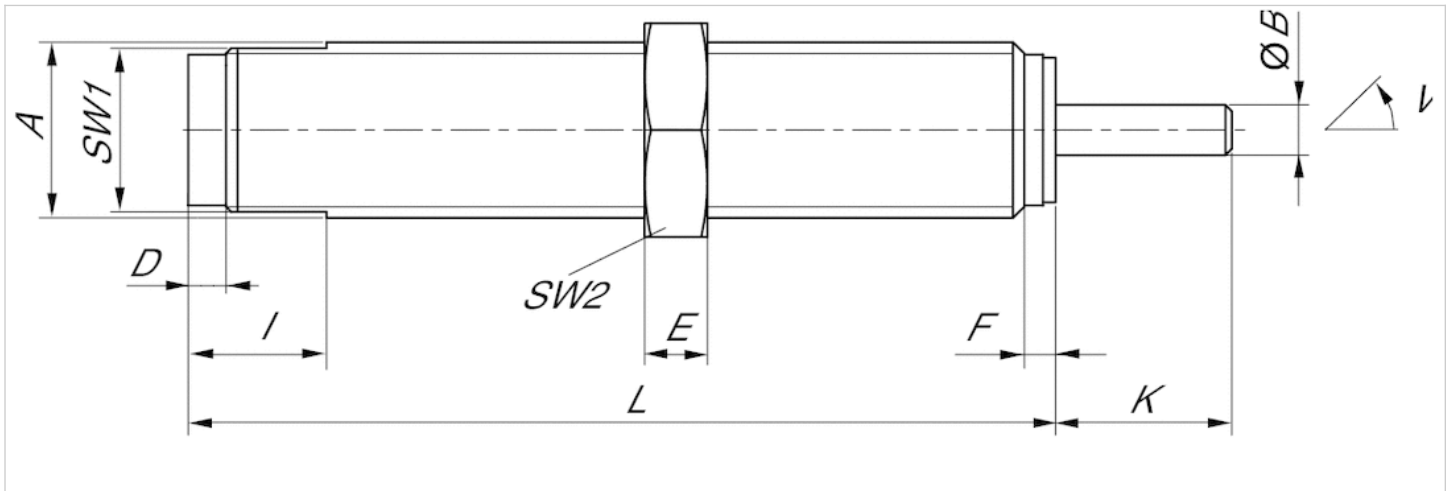
Part No.	Lock nut	Weight	Fig.
R412010304	Steel, salt bath nitrocarburized	0,05 kg	Fig. 1
R412010305	-	0,05 kg	Fig. 1
R412010306	Steel, salt bath nitrocarburized	0,05 kg	Fig. 1
R412010307	Steel, salt bath nitrocarburized	0,15 kg	Fig. 2
R412010308	Steel, salt bath nitrocarburized	0,15 kg	Fig. 2
R412010309	Steel, salt bath nitrocarburized	0,15 kg	Fig. 2
R412010310	Steel, salt bath nitrocarburized	0,29 kg	Fig. 2
R412010311	Steel, salt bath nitrocarburized	0,29 kg	Fig. 2
R412010312	Steel, salt bath nitrocarburized	0,29 kg	Fig. 2

Technical information

Material	
Cylinder tube	Steel, salt bath nitrocarburized
Piston rod	Stainless steel, ground and hardened Stainless steel, hardened
sealing for piston rod	Nitrile butadiene rubber
Lock nut	Steel, salt bath nitrocarburized
Scraper	Polyurethane

Dimensions

Fig. 1



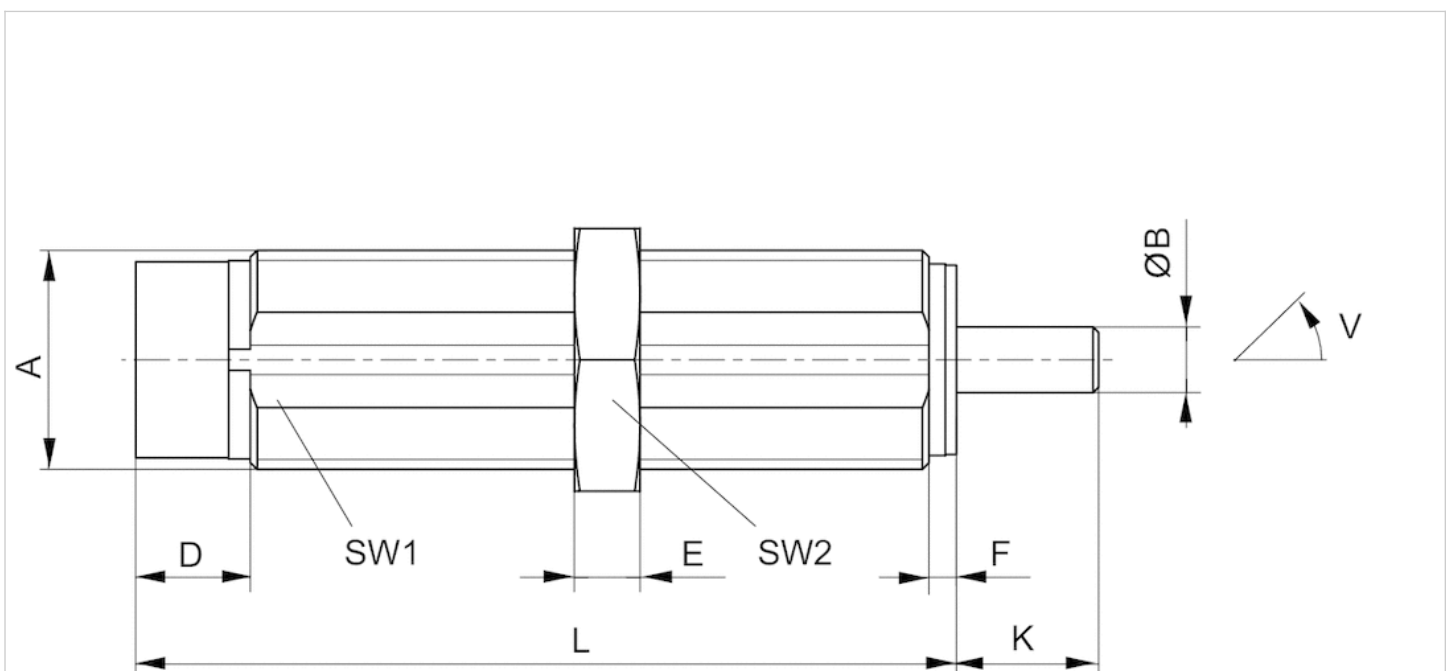
A = mounting thread
V = tilt

Dimensions

Part No.	Type	Mounting thread	ØB	D	E	F	I	K	L	SW1	SW2	W [°]
R412010304	SA1-MC	M14x1,5	4	3	5	2.5	11	14	69	13	17	4
R412010305	SA1-MC	M14x1,5	4	3	5	2.5	11	14	69	13	17	4
R412010306	SA1-MC	M14x1,5	4	3	5	2.5	11	14	69	13	17	4

Dimensions

Fig. 2



A = mounting thread

V = tilt

Dimensions

Part No.	Type	Mounting thread	ØB	D	E	F	K	L	SW1	SW2	W [°]
R412010307	SA1-MC	M20x1,5	6	10.5	6	2.5	13	75	18	24	4
R412010308	SA1-MC	M20x1,5	6	10.5	6	2.5	13	75	18	24	4
R412010309	SA1-MC	M20x1,5	6	10.5	6	2.5	13	75	18	24	4
R412010310	SA1-MC	M25x1,5	8	9.5	8	3.5	25	108	23	30	2
R412010311	SA1-MC	M25x1,5	8	9.5	8	3.5	25	108	23	30	2
R412010312	SA1-MC	M25x1,5	8	9.5	8	3.5	25	108	23	30	2